



## How to access Adobe Software

1. Click on GO PSC!  
(<https://www.parkdalesc.vic.edu.au/go>)
2. Select the Student software link on the top row

The screenshot shows the Parkdale Secondary College website. At the top, there is a yellow navigation bar with the text '(+61) 3 9580-6311', 'parkdalesc@education.vic.gov.au', 'Contact', 'GO PSC!', and social media icons. Below this is the main header with the school logo and navigation tabs: Home, Our College, Learning, Extra Curricular, International, and Enrolment. A search bar is also present. A blue arrow points to the 'Software and IT Resources (PSC email)' link in the top row of a grid of service tiles. The grid includes tiles for Compass, Log a ticket, Office 365, Teams, Software and IT Resources, Vivi, Library, Web Print, Mobility Print, Clickview, PSC Careers website, NAPLAN, Sound Check, My wellbeing, Excel Online, Word Online, Email, Forms, FlipGrid, and OneDrive. At the bottom, there is a footer with accreditation information, social media icons, and links for Contact Us and Privacy Policy.

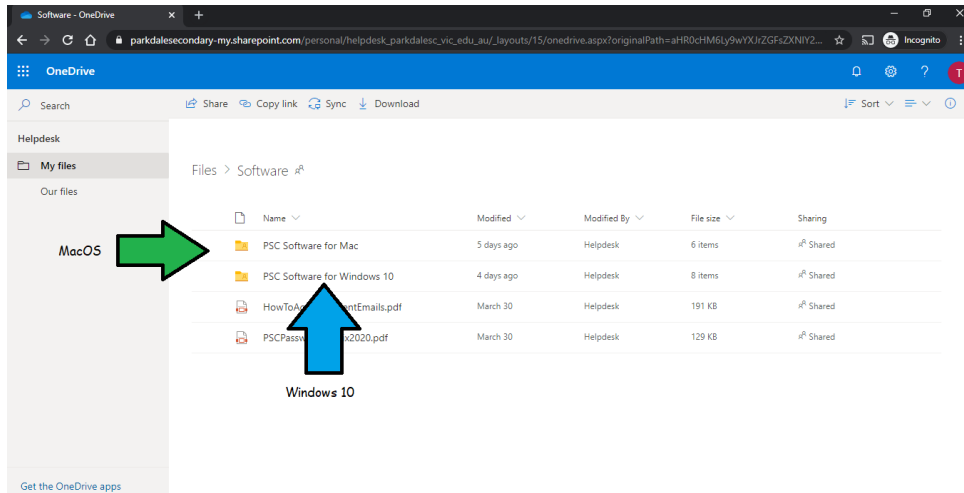
3. Type in your Parkdale email address (studentcode@parkdalesc.vic.edu.au) and Compass password.

The first screenshot shows the 'Sign in' page. It features the school logo, the text 'Sign in', and a text input field containing the email address 'BAY0001@parkdalesc.vic.edu.au'. Below the input field are links for 'Can't access your account?' and 'Sign-in options'. At the bottom are 'Back' and 'Next' buttons. The second screenshot shows the 'Enter password' page. It features the school logo, the email address '← BAY0001@parkdalesc.vic.edu.au', and the text 'Enter password'. Below this is a password input field with masked characters and a 'Forgot my password' link. At the bottom right is a 'Sign in' button.

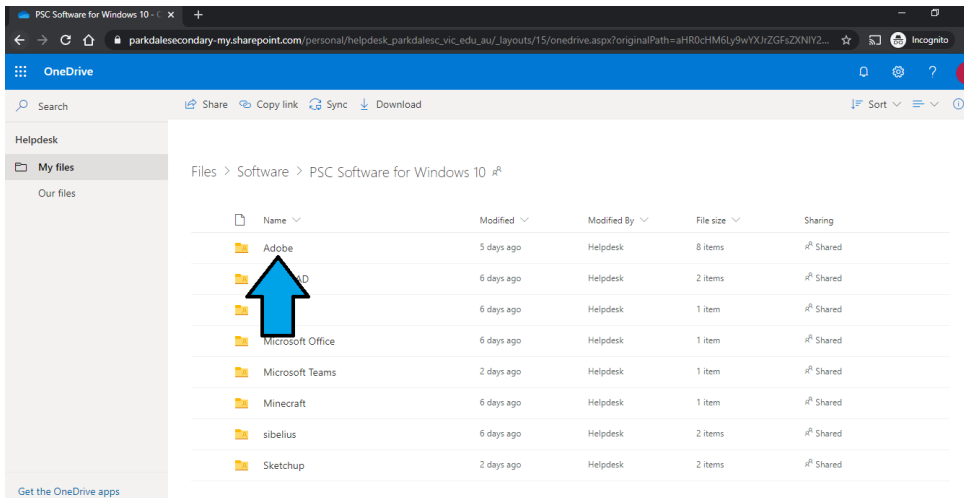
4. If you are prompted to setup your secret questions and a 2<sup>nd</sup> email address, please do so. This allows you to reset your password without having to come to IT



## 5. Select your Operating System

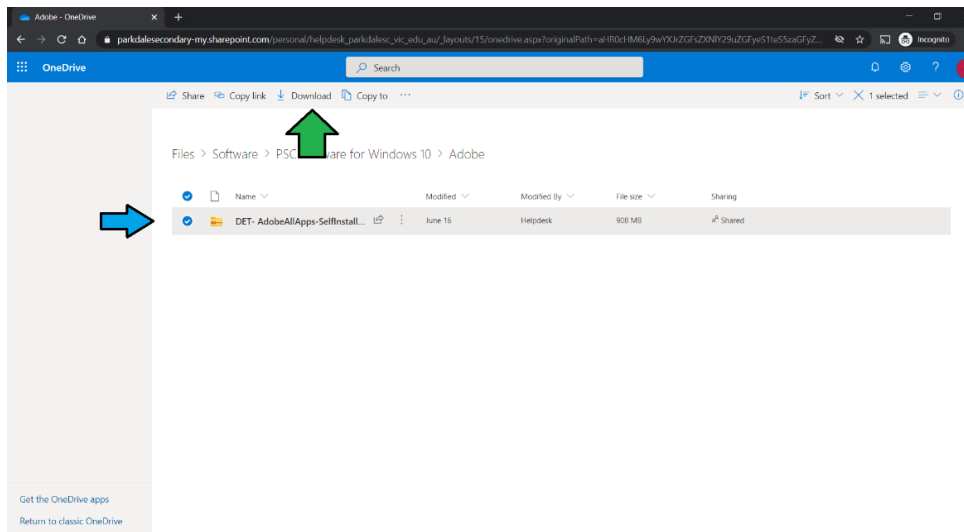


## 6. Select Adobe





7. You MUST run the Adobe Cleaner Tool to clean up any old installs of Adobe products on your computer. Click the below link for further information:  
<https://helpx.adobe.com/au/creative-cloud/kb/cc-cleaner-tool-installation-problems.html>
8. Download the Adobe Creative Cloud Installer. Unzip this file and run the setup file within.

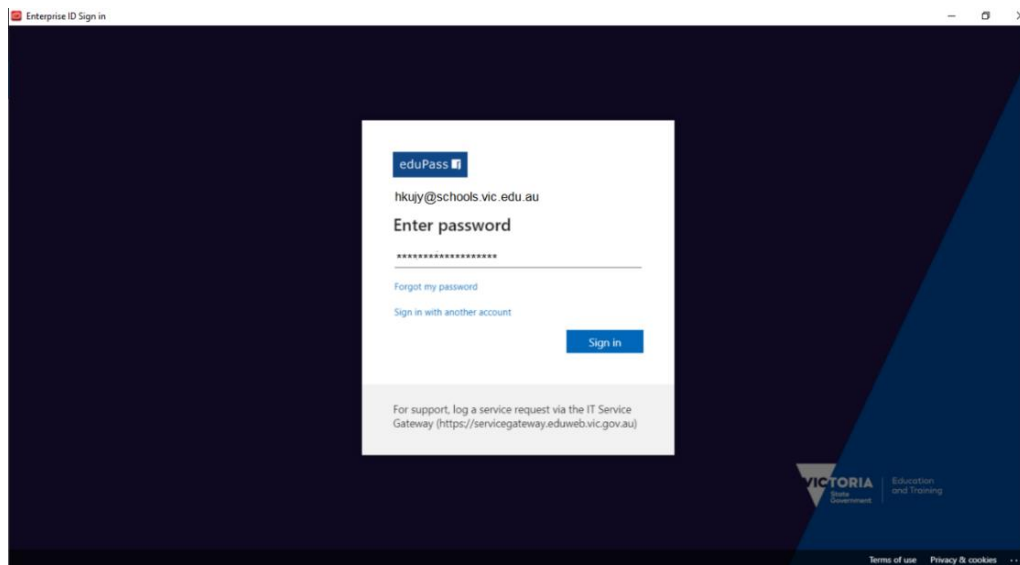
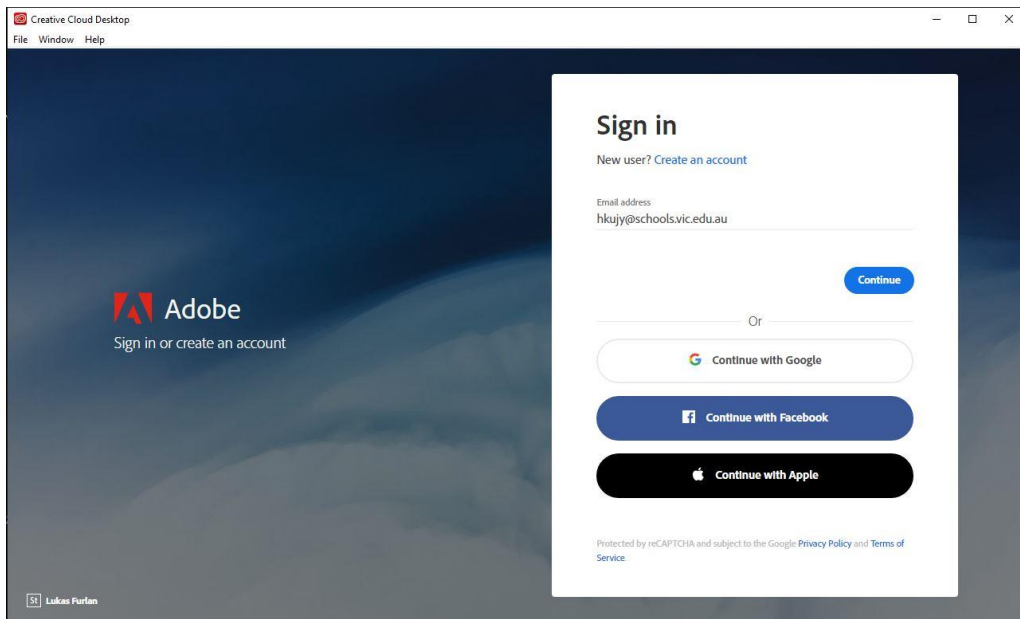




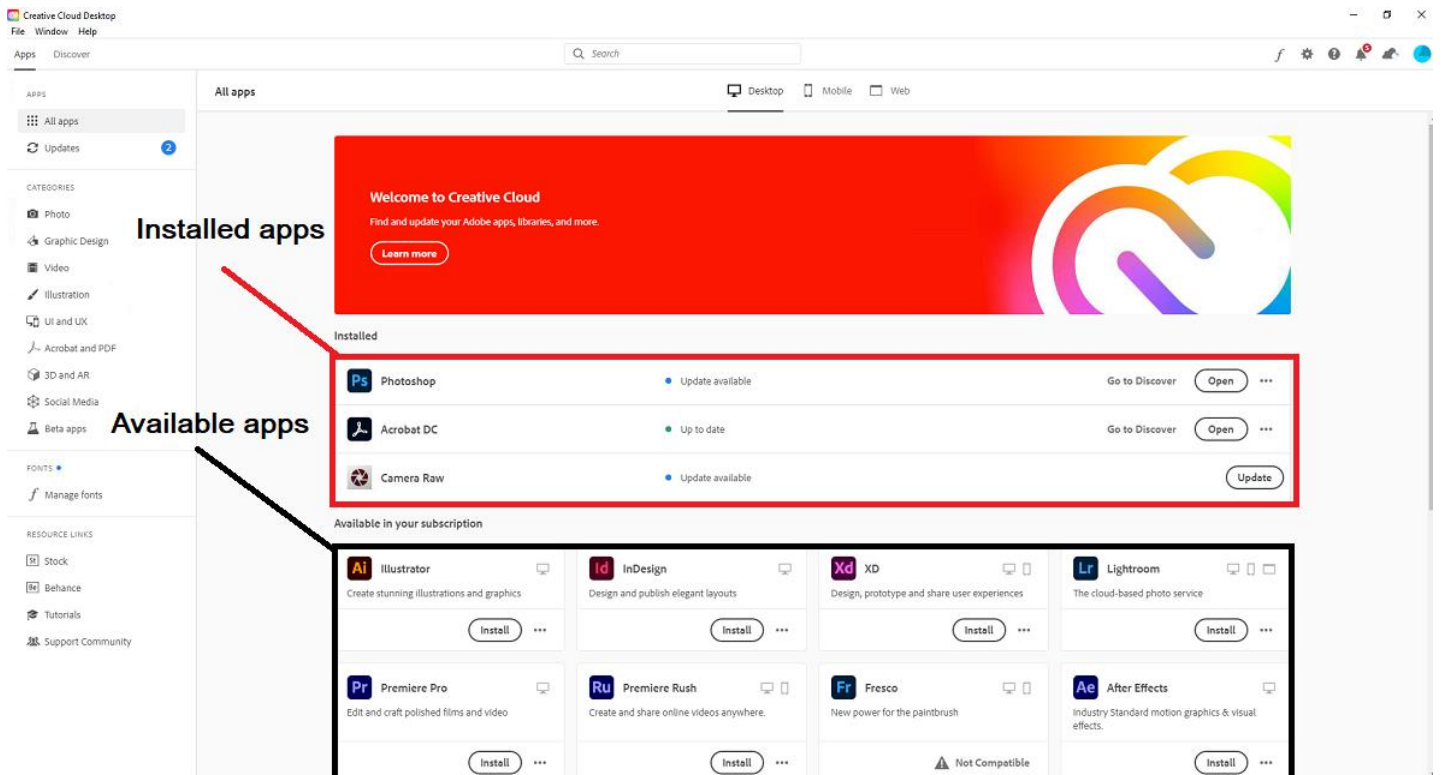
- Once you have installed your software log in with your Department of Education details (not your Parkdale Secondary details). They will look like this:

~~d,/2020/2020/2020,3200~~  
~~d/Ed00,2020Ed~~

Username: [hkujy@schools.vic.edu.au](mailto:hkujy@schools.vic.edu.au)  
Password: Green100!



10. Once you are logged in you need to select the products you need:



11. If you have not received your Department of Education details, please email the helpdesk at [helpdesk@parkdalesc.vic.edu.au](mailto:helpdesk@parkdalesc.vic.edu.au) from your student email address and the information will be texted to your parent/s or guardian/s.

**PLEASE MAKE SURE YOU CLEARLY STATE WHICH PARENT TO TEXT**

All you have to do is type in your @schools.vic.edu.au address and password to access the Adobe Creative cloud. Once you are in select the software you need.